




## Ultrasonic module **110-LAN**

The new system **110-LAN** is developed to become integrated into any new or existing automated system: industrial articulated robot, Ultrasonic crawler, scanner, immersion tank, etc.

This module is control by Gigabit Ethernet link. It allows to pilot your Ultrasonic generator and to store until 100 m of your computer. The Ethernet link (1000 Base-T, 50 Mo/s) allowsw to store all the A-scan, even at high speed acquisition.

- ✓ Integrated UT system
- ✓ View A, B or C scan
- ✓ 2 encoders input
- ✓ Interface with X - Y or R -  $\theta$  arm
- ✓ Ethernet connectivity 
- ✓ Compact size and low weight
- ✓ Synchronisation of multiple modules
- ✓ Works under Euroscan V & UTwin
- ✓ Compatible with XP, Windows 8, Mac OS, Linux
- ✓ DLL available (Labview, Matlab, etc.)
- ✓ Software Development on request

## INDUSTRIAL APPLICATIONS

Flaw detection & Thickness Measurement  
Tube and pipe inspection  
Flaw Inspection & TOFD  
Damage Monitoring  
Composite & Metal materials  
Automated Inspection (robots)

... for Ultrasonic control.



### PULSER

Type.....Spike  
 Voltage.....30 à 280 V  
 Width of spike.....20 to 400 ns  
 Resolution of width.....5 ns  
 Fall time.....4.8 ns  
 Rise time.....5.2 ns  
 PRF.....10 kHz max

### RECEIVER

Amplification.....0 à 88 dB  
 Averaging.....2, 4, 8, 16  
 Noise.....21 nV / Hz  
 Linearity of TGC.....40 dB/us  
 Resolution of TGC.....10 ns  
 Number of TGC points.....256 max  
 Bandwidth to @ -3dB.....22 MHz

### DIGITIZATION

Resolution.....12 bits  
 Frequency.....25, 50, 100 MHz

### FILTERS

Type.....Digital  
 Coefficients.....32  
 .....2.5 MHz  
 .....5 MHz  
 .....10 MHz

### MEMORY

Type.....SRAM  
 Capacity.....2 MB  
 Resolution.....16 bits

### ENCODERS

Number.....2

### ALIMENTATION

.....DC 9 à 18 V

### CONNECTIVITY

.....RJ45  
 .....10/100/1000 Base-T

### INPUT/OUTPUT

4-20 mA.....4  
 TTL - I/O.....6

### CONSUMPTION

Power consumption.....6 W

### WEIGHT

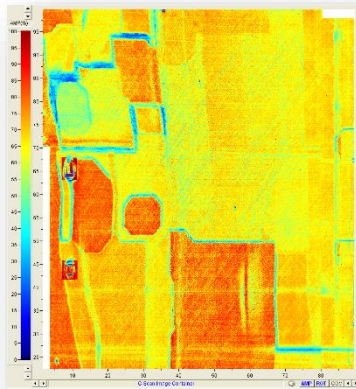
.....300 g



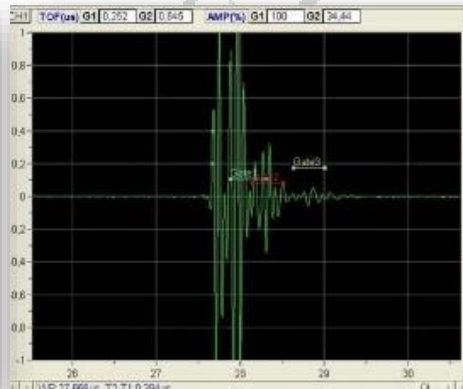
- Gantry System -



- Robot for field testing -



- UTwin: C-scan -



- UTwin: A-scan -



**EUROSONIC**